

Cumberland

Safe Streets and Roads for All
Safety Action Plan

**28 fatal and serious
injury crashes on
our roads between
2019-2023**

**Cumberland is
committed to achieving
zero roadway fatalities
and serious injuries
by 2045.**

**Cumberland
Because one is too
many.**

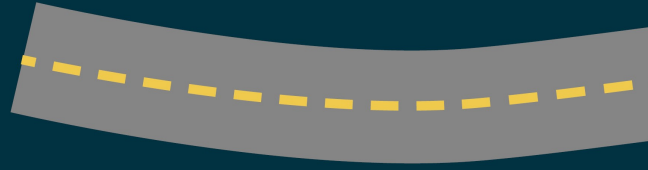


←
*Scan here with
your phone
camera to learn
more!*



Cumberland

Safe Streets and Roads for All
Safety Action Plan



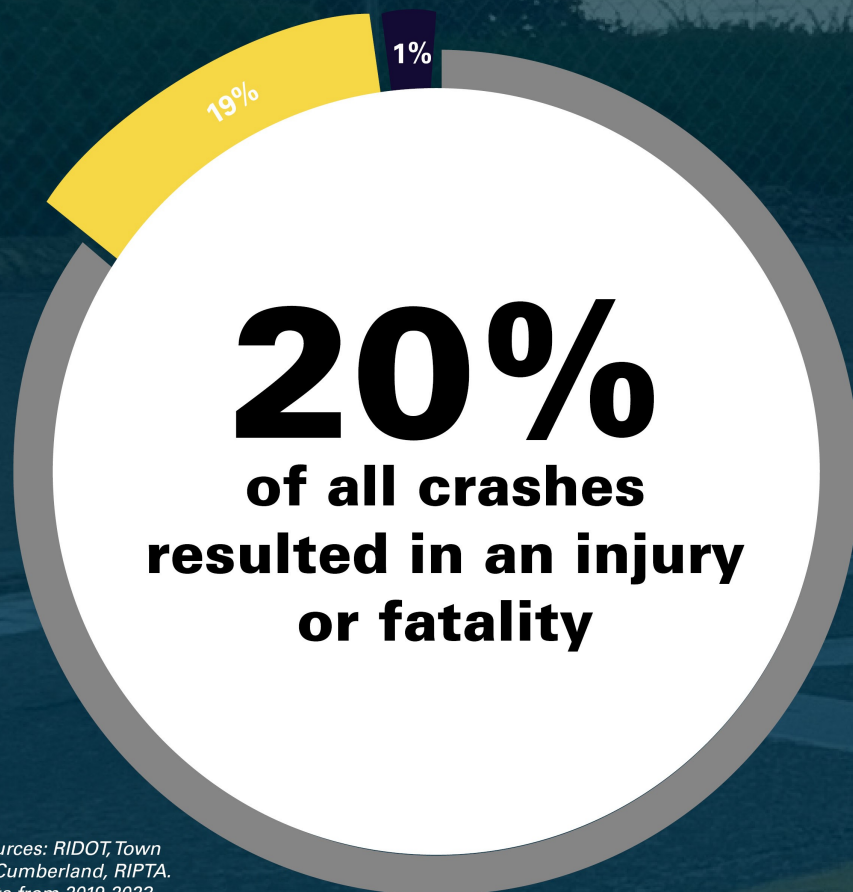
Let's explore crash data in Cumberland together.

2,692

**total crashes
between 2019-2023**

*Cumberland
has the 19th
highest crash
frequency in
RI*

While most crashes
only damage property,
543 crashes resulted
in an injury or fatality



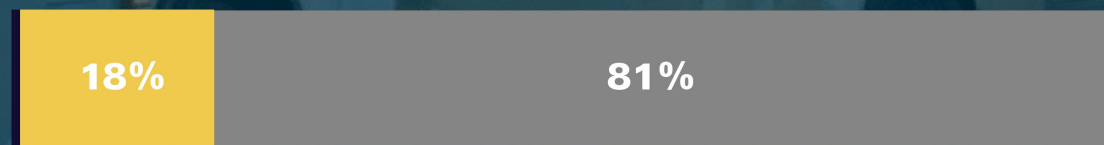
6 fatal
22 serious injury
74 minor injury
441 suspected injury
2,149 property
damage only

Fewer crashes, higher risk:

Motorcycle, pedestrian, and bicyclist crashes happen less often but are much more likely to result in serious injury or death.

fatal and serious injury minor injury property damage only

2,635
total



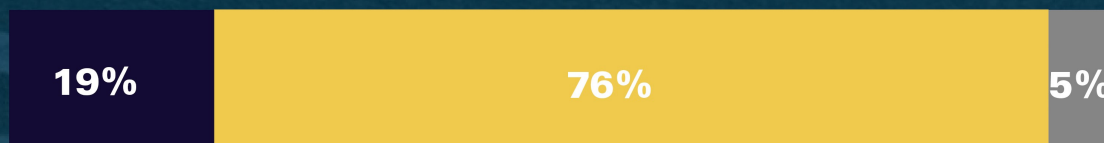
28
total



8
total



21
total





Cumberland

Safe Streets and Roads for All
Safety Action Plan

The Town is committed to building safe streets and roads for all — but safety also depends on you.

Stay alert and share the road.



Scan here with
your phone
camera to learn
more!



Cumberland

Safe Streets and Roads for All
Safety Action Plan

High Injury Network Map

*The Safety Action Plan analyzed crash data and roadway characteristics to identify high-risk roads and intersections for serious and fatal crashes. The High Injury Network includes **52 miles (25%)** of roadway in Cumberland and captures **79%** of fatal and injury crashes.*

Highest priority locations:

1

Ann and Hope Way

2

Broad St./Bernard F. Norton School

3

Diamond Hill Road / Angell Road / Bear Hill Road

4

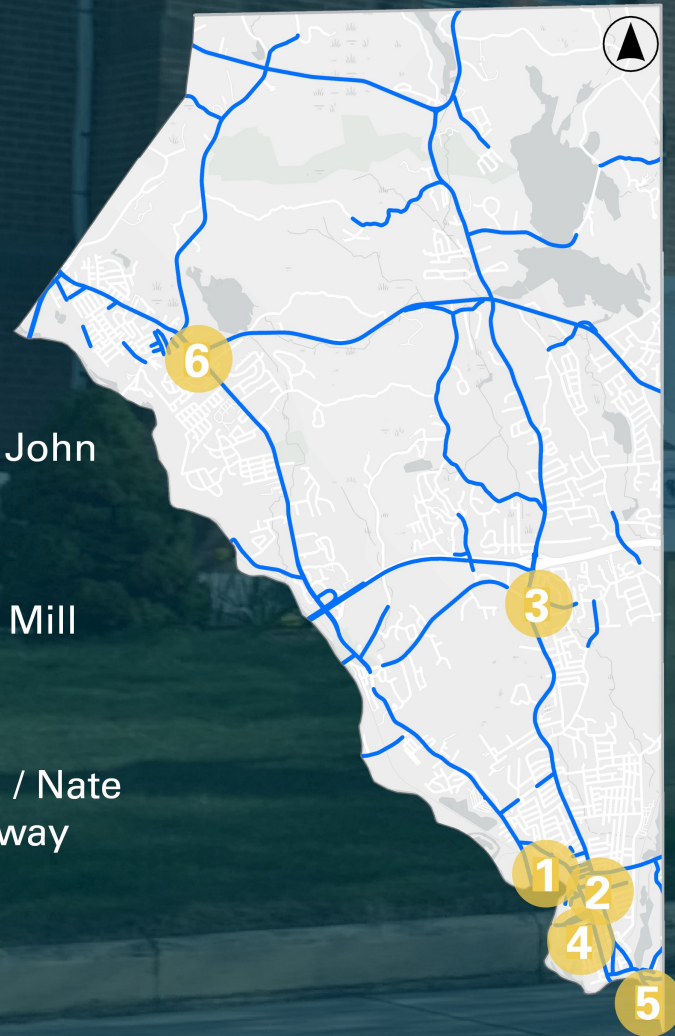
Broad Street / John Street

5

Broad Street / Mill Street

6

Mendon Road / Nate Whipple Highway



Location Spotlight: Ann and Hope Way

The Safety Action Plan identified and prioritized targeted improvements at 14 locations on the High Injury Network.

Identified Issues

The intersection faces safety and accessibility issues, including no bus shelters, outdated pedestrian signals, and limited ADA accommodations. With 241 new residential units proposed, the need for improved pedestrian infrastructure is growing.



Proposed Safety Improvements



Rapid
Response
Flashing
Beacons



Crosswalk
Visibility



Bus stop
improvements



Cumberland

Safe Streets and Roads for All
Safety Action Plan

The road ahead.

Eliminating fatal and serious crashes is the goal. The Safety Action Plan is the roadmap to get us there.



Pursue local, state, and federal grant funding to support design and construction



Update town policies and processes to better support roadway safety



Monitor crash data and revisit the plan to guide future improvements



Scan here with
your phone
camera to learn
more!